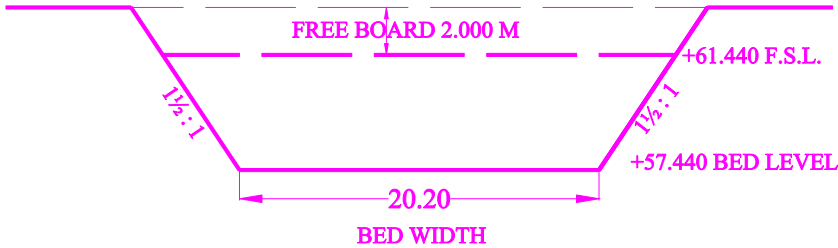
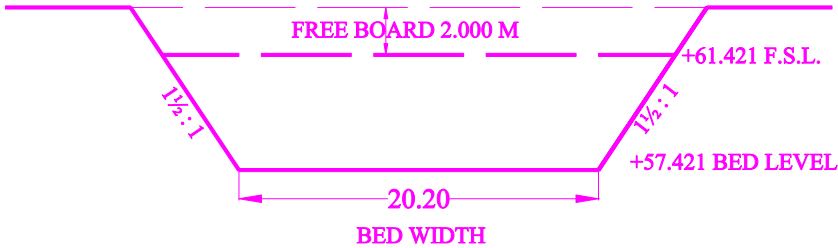


STATEMENT SHOWING THE MODIFIED HYDRAULIC PARTICULARS OF S.S.G. CANAL FROM KM.0.00 TO KM.42.400

SI No.	Reach No as per Appd H.P.		Reach		Length	B.W. (M)	F.S.D(M)	Side slope	Surfae fall	Value of N	Discharge required in Cumces	Designed Discharge in Cumes	Velocity in M/Sec.	Free Board	Reach starting		Loss of Head				Reach Ending		
			From	To											Bed level	F.S.L.	Surface Loss	Loss due to Structure	Transiti on Loss	Total Loss of Head	Bed level	F.S.L.	Remarks
1	2		3	4	5	6	7	8	9	10	11	12	13	14	15	16	17	18	19	20	21	22	23
39		(ii)	32.900 +1.525	32.900 +1.815 32.900	290	20.20	4.00	1½ :1	1: 15000	0.018	99.110	99.470	0.949	2.000	57.440	61.440	0.019	--	--	0.019	57.421	61.421	



REACH STARTING



REACH ENDING